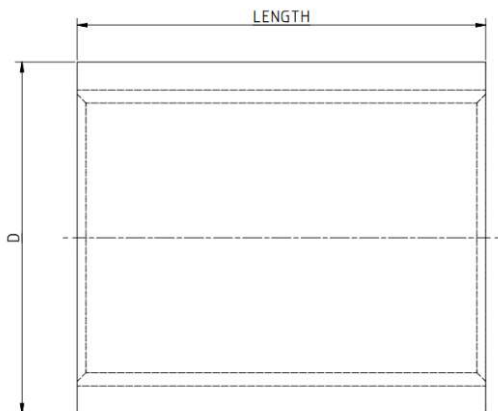
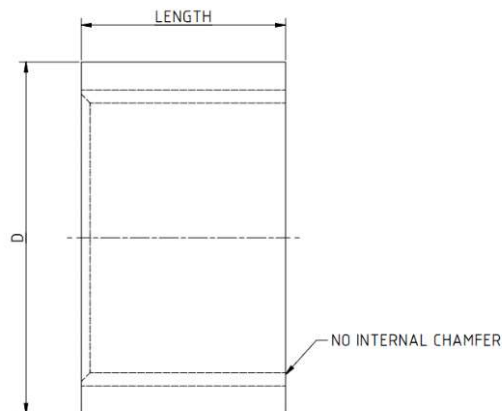


SOCKET DETAILS



FULL SOCKET



HALF SOCKET

IN ACCORDANCE WITH BS EN 10241:2000

HEAVY				MEDIUM				
DN	D (mm)	FULL SOCKET LENGTH (mm)	HALF SOCKET LENGTH (mm)	DN	FULL SOCKET D (mm)	FULL SOCKET LENGTH (mm)	HALF SOCKET D (mm)	HALF SOCKET LENGTH (mm)
6	15.0	19	8	6	15.0	17	15.0	8
8	18.5	27	11	8	18.5	25	18.5	11
10	22.0	28	12	10	21.3	26	21.3	12
15	27.0	37	16	15	26.6	34	26.6	15
20	32.5	39	19	20	31.8	36	31.8	17
25	39.5	46	21	25	39.5	43	39.5	20
32	49.0	51	25	32	48.3	48	48.3	22
40	56.0	51	25	40	54.5	48	54.5	22
50	68.0	60	28	50	66.2	56	68.0	26
65	84.0	69	30	65	82.0	65	84.2	30
80	98.0	75	35	80	95.0	71	98.4	34
100	124.0	87	40	100	121.4	83	124.0	40
125	151.0	96	44	125	146.3	92	149.0	44
150	177.0	96	44	150	173.3	92	177.0	44

Outside diameters listed are minimum.

Information is provided as guidance only. Do your own research.